



Reliable, Accurate & Exceptional Value

Merlin Manual Paint Dispenser

Reliable, Accurate & Exceptional Value

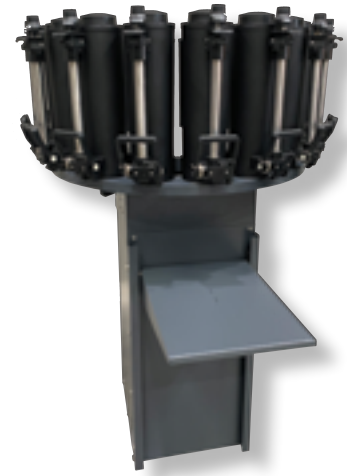
Merlin Manual Paint Dispenser

Available in 12, 16 and 24 canister configurations and used for universal, low or zero VOC, or solvent-borne colorant systems, the Merlin manual paint dispenser delivers what every paint center needs.

Best-in-class, performance, durability, and value.

Features

- Simple & easy-to-use manual dispenser
- Reliable, durable and built to last
- Ideal for small to mid-size paint centers



Technical Specifications

Type	Countertop/floor stand versions
Technology	Piston pump
Canister Material	2.4 ltr Nylon 66 solvent resistant canisters. ("Nylon 66 is frequently used when high mechanical strength, rigidity, good stability under heat and/or chemical resistance are required")
Compatibility	Universal/water/solvent-based colorants
Number of Canisters	Available with 12/16/24 canister turntables
Pump Size	Piston pump (stainless steel) 2 fl. oz (60 ml)
Accuracy	Minimum dispensing – 0.10 ml
Timer	Electrical pre-programmed
Can Handling	Manually adjustable can shelf
Suck Back	Available
Dimensions	Dimensions (12 C, countertop) - W 28 X D 28 X H 23 in Dimensions (12 C, floor stand) - W 28 X D 28 X H 51 in Dimensions (16 C, countertop) - W 31 X D 31 X H 51 in Dimensions (16 C, floor stand) - W 31 X D 31 X H 51 in Dimensions (24 C, countertop) - W 39 X D 39 X H 23 in Dimensions (24 C, floor stand) - W 39 X D 39 X H 51 in
Net Weight	12 C (90 lb.), 16 C (106 lb.), 24 C (143 lb.)
Power Supply	110V/60Hz

BYK-Gardner USA
9104 Guilford Road
Columbia, MD 21046
USA

Phone +1-800-343-7721
+1-301-483-6500
Fax +1-800-394-8215
+1-301-483-6555

www.byk-instruments.com

A member of  ALTANA

 BYK